

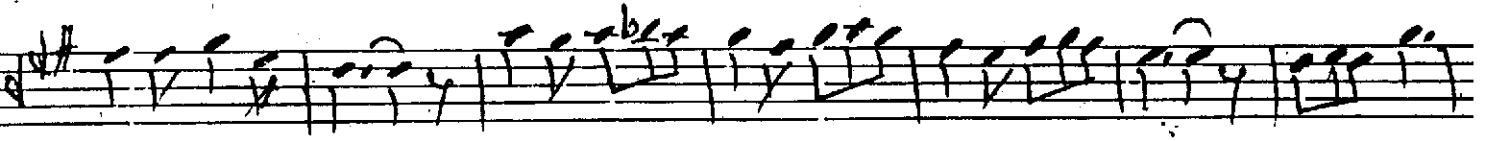
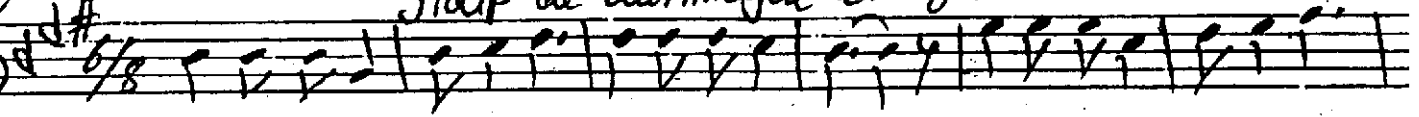
1. Sema

Segah Sarke

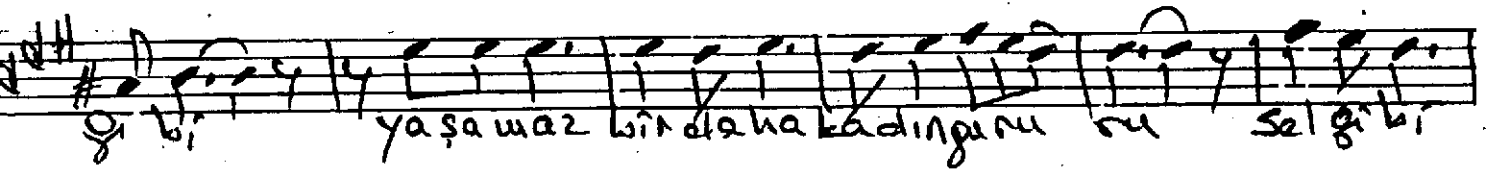
Söz: Niyâ pekeri
Beste: Ali Şevkan

108

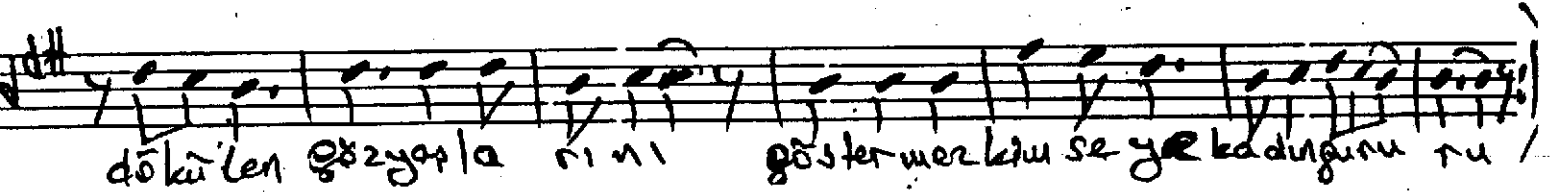
Gidip de dönmeyen bir yolcu gibi



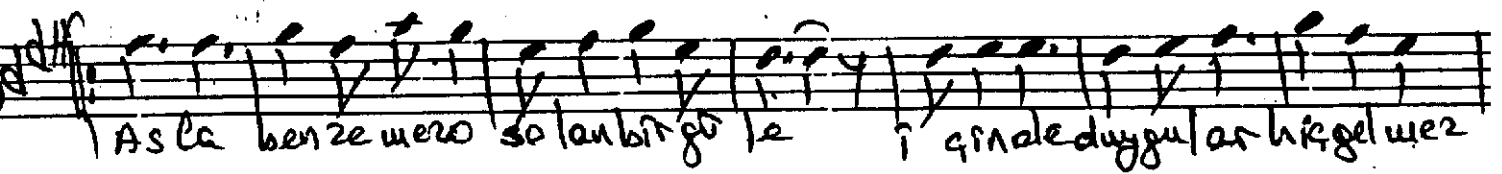
Gidip de dönmeyen bir yolcu



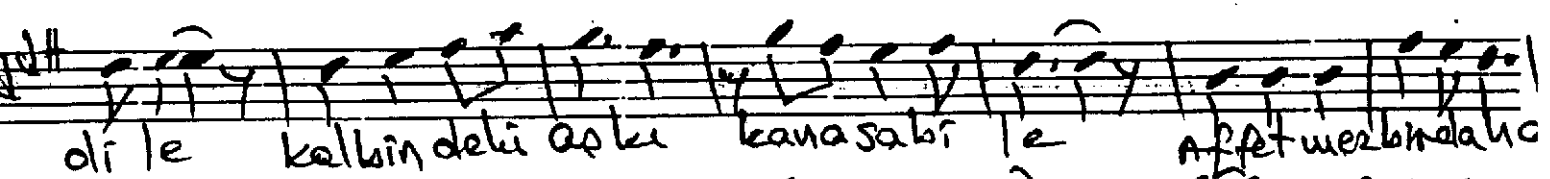
Gibi yaşamaz bir daha kadını ru sel gibi



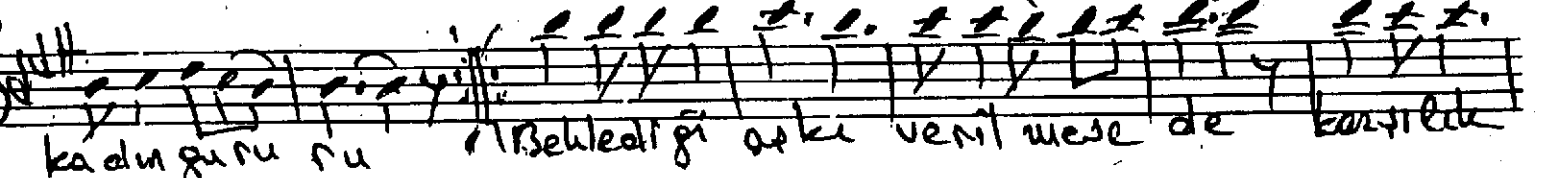
dökülen gözyollarını göstermez ki seyle kadını ru



Asla benzeri olan bir göle i girdi duygular hiç gelmez



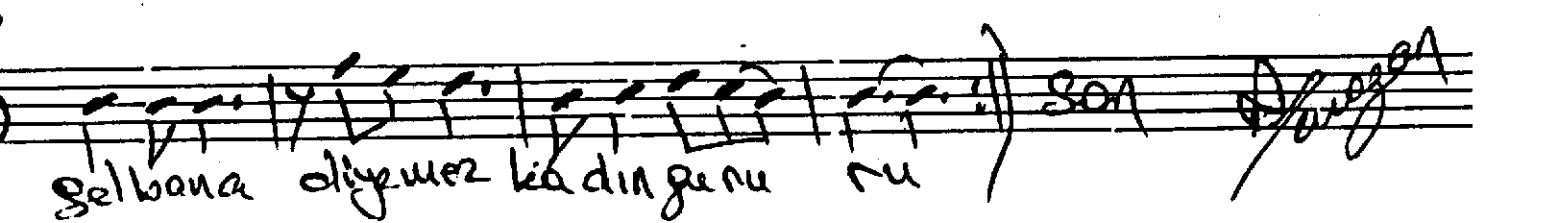
di le kalbindeki aşkı kanasabi le affetmez bir daha



kadını ru Behlediği aşkı verit mese de kurtile



görmeden kalbi sen de yıllarca bıkırsan hep bekle se de



Selbana oluyuz kadını ru Son